



## // IMPROVE YOUR FEEDING & SCREENING PROCESSES

CREATING HIGH-PERFORMANCE  
SOLUTIONS FOR IRON ORE  
PELLETIZING PLANTS IS  
WHO WE ARE.

- IMPROVE BED PERMEABILITY
- ALLOW SEGREGATION CONCEPT
- ELIMINATE BOTTLENECKS



## A PARTNERSHIP THAT LASTS

With our world-class expertise in surface engineering and our proficiency in complex industrial processes, we have built a solid reputation with multiple worldwide top mining companies in the metallurgical sector.

### PROPRIETARY THERMAL COATING TECHNOLOGY

Metal7 has been manufacturing coated, wear-resistant roller and screen rolls for iron ore pelletizing plants for over 35 years. Our A-19 coated rollers are the reference in the market.

### GRATE FEEDING STATION ROLLER SCREEN/FEEDERS

Whether your need is for a new pellet plant project or an existing pelletizing line, Metal7 is in position to offer optimal solutions.

- Single deck roller feeder
- Double deck roller screen/feeder
- Triple deck roller screen/feeder

**REQUEST A QUOTE FROM YOUR METAL7 REPRESENTATIVE**



SINGLE DECK  
ROLLER FEEDER



DOUBLE DECK  
ROLLER FEEDER



TRIPLE DECK ROLLER  
FEEDER/SCREEN

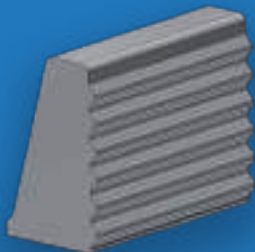
## // INDURATION FURNACE REPLACEMENT PARTS

FOR INDUSTRIES REQUIRING HEAT &  
CORROSION RESISTANCE QUALITIES:

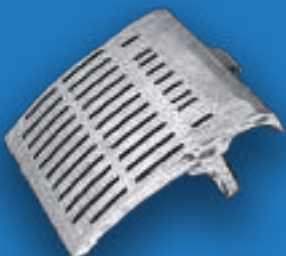
- PELLETIZING OPERATIONS
- SINTERING PLANTS



**GRATE  
BARS**



**SIDE WALLS**  
(UPPER AND LOWER)



**GRATE  
PLATES**



**450L BURNERS**



## NEXT-GENERATION CASTINGS

Made in a state-of-the art US-Based foundry using a high-degree of automation and environmentally-friendly processes. Whether you require a small batch or 10,000 pieces per year, we provide the same exceptional service level.

**WE OFFER THE FOLLOWING HIGH-QUALITY AND  
TEMPERATURE-RESISTANT ALLOYS:**

- STAINLESS STEEL
- STEEL
- NI-HARD
- HIGH CHROME IRON

## 450L BURNERS

**AN INNOVATIVE SOLUTION TO OPTIMIZE AND REDUCE THE  
ENVIRONMENTAL FOOTPRINT OF THE PRIMARY INDUSTRY**

- 70% reduction of the amount of cooling air in the furnace
- Reduces oil consumption between 4 to 6%
- Reduces overall CO2 emissions
- 100% adaptable to pyrolysis oils